

REGISTRATION FORM **en route**

Mail to: Center for Mark Twain Studies, Elmira College, One Park Place, Elmira, NY 14901
DEADLINE: OCTOBER 7th, 2010

Name _____ College-University _____

Address _____ Phone _____

City-State-Zip _____

E-mail: _____ I give permission for my email to be included in a List of Attendees. YES NO (Circle one.)

Enclose check for \$130.00 payable to The Center for Mark Twain Studies. Payment includes all food.

If paying by credit, enter credit card number: _____ Circle one: (V) (MC) Exp. Date: _____ / _____

Three digit number of back of card: _____

If preferred, please register and pay by credit card by phoning The Center for Mark Twain Studies at (607) 735-1941.

Signature: _____

Housing is available at the Holiday Inn Riverview at a rate of \$92.00 per night plus NYS Room Tax fees. Please call the Hotel directly at (607) 734-4211 by September 18th, 2010, to reserve rooms at the reduced Symposium rate. The Group Code ID is: MTS.

Director
Secretary
Quarry Farm Caretaker

Barbara Sneedcor
Kathy Solometo
Tim Morgan



Elmira College
Center for Mark Twain Studies
(607) 735-1941
twaincenter@elmira.edu

Center for Mark Twain Studies
Elmira College
One Park Place
Elmira, N.Y. 14901

Fall 2010 Programming

Sam and Laura

A Play by Ron Powers

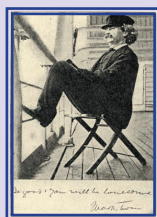
The Trouble Begins at Eight
Centennial Lecture Series

en route A Weekend Symposium

A Tramp Abroad and

Following the Equator

October 15 and 16, 2010



Mark Twain's

175th Birthday Celebration



Join us for...

The Trouble Begins at Eight

2010 Centennial Fall Series

A “Comet”-Studded Program



Saturday, September 11th

7 pm in the Barn at Quarry Farm



A play by Ron Powers
Based on a true story in the life of Mark Twain

*The New Orleans riverfront in the spring of 1858...
a young girl, away from her family farm for the first
time in her life...
a young Mississippi steamboat pilot destined for
literary immortality...
an encounter and brief romance...
a yellow ribbon...
separation and heartbreak...
a life of reunions played out in dreams...*

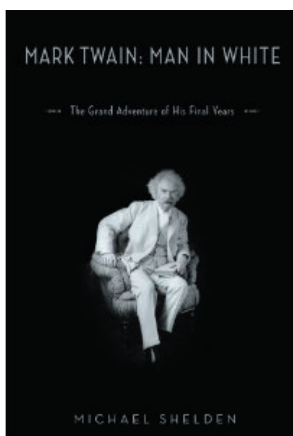
Enjoy performers from the Vermont Actors' Repertory Theatre as they stage a Reader's Theatre production of Ron Powers' compelling play, *Sam and Laura*. Mr. Powers, native son of Hannibal, Missouri and Pulitzer Prize winning author, has written many books about Mark Twain including his 2005 biography, *Mark Twain: A Life*; *Tom and Huck Don't Live Here Anymore*; *Dangerous Water: A Biography of the Boy who Became Mark Twain*; and *White Town Drowning*. Mr. Powers also is the author of *Flags of our Fathers* (with James Bradley) and most recently collaborated with the late Edward M. Kennedy on his memoirs, *True Compass*. Ron Powers will narrate this evening's performance.

Seating for this special performance is limited. Please call The Center for Mark Twain Studies by Thursday evening, September 9th, to reserve tickets. (607) 735-1941. Parking at Quarry Farm also is limited. Carpool when possible.

This performance is made possible by generous funding from the Mark Twain Foundation and Friends of the Center.

Wednesday, September 22th

8 pm in the Barn at Quarry Farm



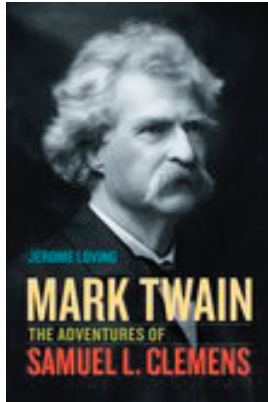
Mark Twain: Man in White

The Grand Adventure of His Final Years

Michael Sheldon *Indiana State University*

One day in late 1906, seventy-one-year-old Mark Twain attended a meeting on copyright law at the Library of Congress. The arrival of the famous author caused the usual stir -- but then Twain took off his overcoat to reveal a “snow-white” tailored suit and scandalized the room.

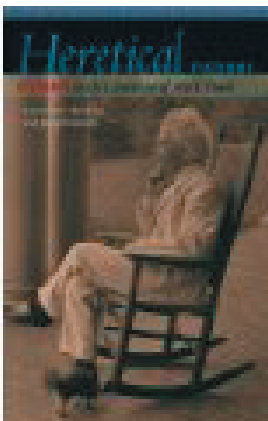
Join biographer Michael Sheldon as he recounts incidents from his recent biography of Mark Twain's last years and provides a remarkable portrait of the man himself and of the unforgettable era in American letters that, in many ways, he helped to create.



Mark Twain on the Eve of **HUCKLEBERRY FINN**

Jerome Loving *Texas A&M University*

Join biographer Jerome Loving for an up-close examination of the author and his times in 1884, one done as a “sequel” to Loving’s recent biography, *MARK TWAIN: THE ADVENTURES OF SAMUEL L. CLEMENS*. The basis for this talk is the unpublished Prologue of a work-in-progress to be called “*Annus Mirabilis: Mark Twain’s America in 1885.*” With more than 25 illustrations, Dr. Loving’s presentation will follow the author during the last half of 1884 when *Adventures of Huckleberry Finn* was about to change the course of American literature.



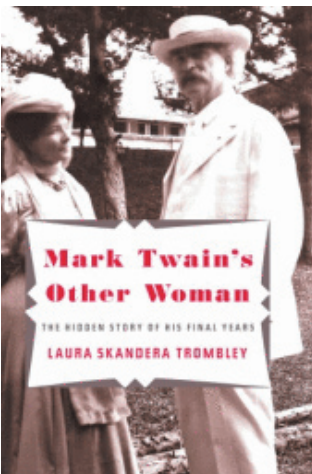
The Faith of a Heretic:

Mark Twain’s Religious Thinking in His Literary Works

Lawrence I. Berkove *University of Michigan Dearborn Emeritus*

Joseph Csicsila *Eastern Michigan University*

Join Lawrence Berkove and Joseph Csicsila as they challenge the prevailing belief that Mark Twain’s position on religion hovered somewhere between skepticism and out-right heresy. Their recent book, *Heretical Fictions: Religion in the Literature of Mark Twain*, is the first full-length study to assess the importance of Twain’s heretical Calvinism as the foundation of his major works, bringing to light important thematic ties that connect the author’s early work to his high period and from there to his late work.



Mark Twain’s 175th Birthday Celebration

Which One Do You Want? The Binary Mark Twain

Laura Skandera Trombley *Pitzer College Claremont, California*

Mark Twain has been dead for one hundred years now although you would hardly notice it. Academics frequently gather at scholarly conferences and argue about Twain’s life, legacy and literature. A recent search on Google resulted in 22 million hits under half a second ~ 18 million more than Walt Whitman and 19 more than Ernest Hemingway. Twain even has a new publication coming out in November 2010. It seems as though it is a Mark Twain world, an observation Twain would endorse (but only if he were generously compensated). Join Laura Skandera Trombley as she shares her thoughts about Mark Twain’s determined efforts at legacy making, his long-lived cultural popularity, and despite a century of examination how the person-persona still remains a mysterious stranger.

Directions to Quarry Farm for local attendees:

From Elmira College, head east on Washington across the Clemens Center Parkway to Sullivan Street. Turn right on Sullivan. Turn left on East Avenue. Turn left on Crane Road. Quarry Farm will appear on your left. Please park on the grassy area behind the Barn. Quarry Farm is a fragile, natural environment. Please exercise care.

If using a GPS, enter: 131 Crane Road, Elmira, NY 14901.

en route Symposium, October 15 and 16

FRIDAY EVENING 6:30 pm in Hamilton Hall
WELCOME RECEPTION **DINNER** **KEYNOTE ADDRESS**

Tramping Beyond Innocence, Steamboats, and Sagebrush

Louis J. Budd *Duke University Emeritus*

In *A Tramp Abroad* and *Following the Equator*, S.L. Clemens continued to adapt and enrich the framing of Mark Twain as an ironic, spontaneous, irreverent, and beguiling personality who deserves appreciative reading in our time and encourages it in turn.

SATURDAY MORNING

“All I wanted was to go somewhere”

Stephen Railton *University of Virginia*

Sam Clemens traveled thousands of miles during his lifetime, including around the world, but Mark Twain’s imagination went even further, in time as well as space. Why? What were they looking for - or lighting out from?

“I am no longer of ye”: Mark Twain’s Ambivalence about Europe and America in *A Tramp Abroad*

Holger Kersten *Universität Magdeburg*

A Tramp Abroad, when re-examined in the context of unpublished manuscripts and journal entries, illuminates Twain’s confrontation with the challenges of intercultural encounters during his stay in Continental Europe.

Mark Twain, An Artist of the Beautiful

Jeffrey Melton *University of Alabama*

This presentation will examine Mark Twain’s pose as art student in *A Tramp Abroad* and will consider how his satirical eye works in conjunction with his artistic eye by placing his text firmly within the cultural wars of his day.

Twain, Twichell and the Butcher Beilstein: After the *A Tramp Abroad* Trip

Steve Courtney *Independent Scholar Terryville, Connecticut*

As the Clemens-Twichell correspondence shows, the intense month-long companionship and collaboration between the two in 1878 that gave rise to some of the richest sections of *A Tramp Abroad* continued long afterward and reveals key elements of the creative process, both on Clemens’ part and on Twichell’s, that produced the book.

“Young” Walter F. Brown: Before, During, and After *A Tramp Abroad*

Alex Effgen *The Editorial Institute at Boston University*

An illuminated presentation on the life and work of Mark Twain’s illustrator, examining the parallels in subject matter and career path between artist and author.



LUNCH

In the Campus Center

en route Symposium, October 15 and 16

SATURDAY AFTERNOON **FOLLOWING THE EQUATOR**

From Afar: Private Reasons and Public Voice in Mark Twain’s Travel Writing

Catherine Watson *Professional Travel Writer and Editor*

A discussion of the craft of travel writing in general and of Mark Twain’s travel writing in particular will provide a context to speculate about emotional and chronological distances Twain had to traverse to complete *Following the Equator*.

“So Much for the Aborigines”:

The Politics of Selective Racial Sympathy in *Following the Equator*

Kerry Driscoll *Saint Joseph College*

While on his world lecture tour, Twain sharply criticized the dispossession and mistreatment of Australia’s aboriginal population, yet curiously drew no parallels to the remarkably similar effects of colonialism on native peoples in the United States. Why?

Mark Twain’s India: Land “of splendor and rags”

Mary Boewe *Independent Scholar Farrington Village, North Carolina*

In *Following the Equator*, the section on India has a rags-and-riches theme which alleviates the tourist-guide tone of the book; its actual writing may even have alleviated Mark Twain’s despondency over the recent death of Susy, his talented daughter.

Following the Equator to the Horizon-Rim of Consciousness:

Mark Twain en route to India and Beyond

Dwayne Eutsey *Independent Scholar Easton, Maryland*

This paper will examine how *Following the Equator* is an important literary/spiritual way station on Twain’s journey toward the Mysterious Stranger.

“We shall not make very much out of India...”

Barbara Snedecor *Elmira College*

The correspondence of Olivia Langdon Clemens reveals her fascinations, worries, and grief against a backdrop of exotic nineteenth-century travel.

DINNER & MUSIC

In the Barn at Quarry Farm

Panel Moderators

Joseph Csicsila *Eastern Michigan University*

Chad Rohman *Dominican University*

Ann Ryan *Le Moyne College*

Mark Woodhouse *Elmira College*

Terry Oggel *Virginia Commonwealth University*

Symposium Chair

