

Elmira College Center for Mark Twain Studies

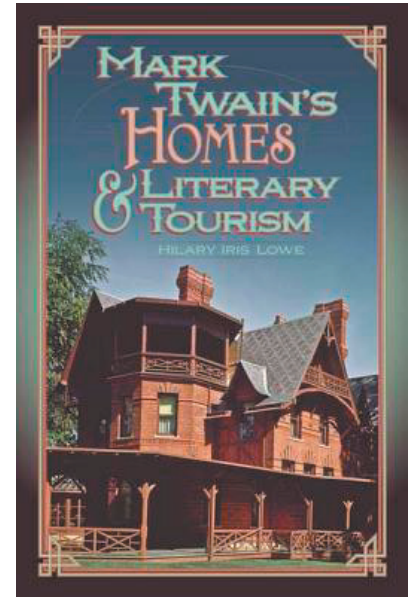


The Trouble Begins at Eight Fall 2012 Lecture Series

Wednesday, October 3rd in the Barn at Quarry Farm 8 p.m.

Mark Twain's Homes and Haunts: Mark Twain Museums and Public History Hilary Iris Lowe Temple University

Since shortly before his death, local boosters, Twain fanatics, scholars, and others ~ have wanted to see where Mark Twain (and Tom Sawyer and Huck Finn) lived. These fans put a great deal of faith in his houses as places where they could access the “real” Mark Twain. At his houses, now museums, Twain remains as popular as he ever was during his lifetime. Focusing on the history of Florida, Hannibal, Hartford, and Elmira at the moments when members of these communities made the decision to “save” the historic structures associated with Twain, Hilary Iris Lowe examines our popular devotion to Twain during the twentieth century and how the rise of his house museums have changed the way we understand Mark Twain.

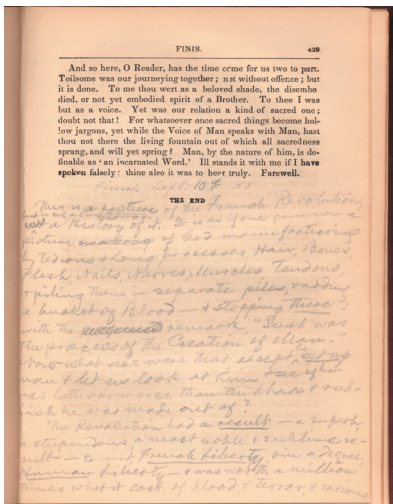


Hilary Iris Lowe is an Assistant Professor in the Intellectual Heritage program at Temple University in Philadelphia and author of *Mark Twain's Homes and Literary Tourism* (2012).

Doors open at 7:30. *The Trouble Begins at Eight.*

Wednesday, October 10th in the Barn at Quarry Farm 8 p.m.

The Bones of an Opinion: Marginalia from the Elmira College Collection Mark Woodhouse Elmira College



Samuel Clemens's marginal comments in volumes in the Mark Twain Collections of Elmira College have provided food for thought for scholars for many years. Revisiting this material gives unique insight into Clemens's creative mind as well as raising questions about the nature and the future of scholarly evidence.

Mark Woodhouse is the Head of Technical Services, College Archivist, and Mark Twain Archivist at Elmira College where he has served for 25 years.

Doors open at 7:30. *The Trouble Begins at Eight.*

(More on reverse side.)



The Trouble Begins at Eight

Fall 2012 Lecture Series



Wednesday, October 17th in the Barn at Quarry Farm 8 p.m.

Mark Twain and America's Ownership Society

Lawrence Howe *Roosevelt University*

Larry Howe will address his analysis of Mark Twain's vexed interest in property, the subject of Professor Howe's current book project. He will focus particularly on the Clemens family's Tennessee land, which influenced Sam Clemens from an early age, and Mark Twain's insightful strategies for protecting his copyrights later in life. Howe's research on this topic refutes the prevailing portrait of Mark Twain as gifted literary man with no head for business. To the contrary, Twain was astutely aware that property was not the sure thing that many an American dream has been built upon, and his life and writing provide insight into an American fascination with property as a measure of social worth.

Larry Howe teaches American literature and film studies at Roosevelt University. He is the author of *Mark Twain and the Novel: The Double-Cross of Authority*.

Enjoy light refreshments before this concluding lecture of the Fall Season. Doors open at 7:15. *The Trouble Begins at Eight*.

Friday, November 30th in Historic Cowles Hall on the Elmira College Campus 7 p.m.

Mark Twain's 177th Birthday Celebration

[NOTE TIME AND LOCATION OF THIS LECTURE.]

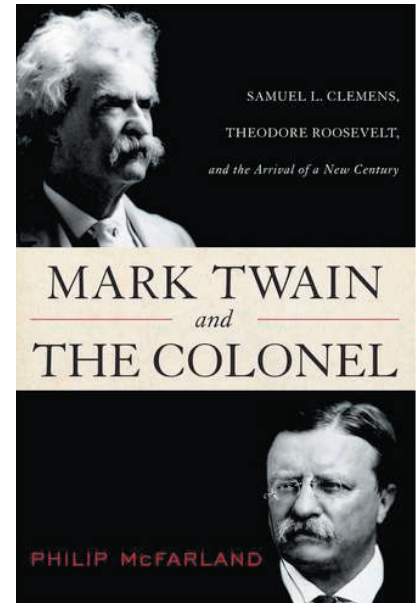
Mark Twain and America's "Worst President"

Philip McFarland *Author and Biographer*

Remarks on the prickly relationship between Samuel L. Clemens and Theodore Roosevelt through two decades when their lives overlapped and modern America was formed.

Philip McFarland is the author of two works of fiction and six of nonfiction, including *Hawthorne in Concord* and *Loves of Harriet Beecher Stowe*. His most recent book is *Mark Twain and the Colonel: Samuel L. Clemens, Theodore Roosevelt, and the Arrival of a New Century* (2012).

Enjoy birthday cake and punch following the presentation.



Unable to attend our lecture series? Why not listen online?

Some of *The Trouble Begins at Eight* lectures are available on Elmira College youtube. Go to elmira.edu, Quicklinks, Mark Twain Connection, Lecture Series, and choose "Watch" or "Listen."

Directions to Quarry Farm for local attendees:

From Elmira College, head east on Washington Avenue across the Clemens Center Parkway to Sullivan Street. Turn right on Sullivan. Turn left on East Avenue. Turn left on Crane Road. Quarry Farm will be on your left. Please park on the grassy area behind the Barn. **For GPS: 131 Crane Road Elmira, NY 14901**

Elmira College
Center for Mark Twain Studies
(607) 735-1941
twaincenter@elmira.edu



Director
Secretary
Quarry Farm Caretaker

Dr. Barbara Snedecor
Christy Gray
Timothy Morgan